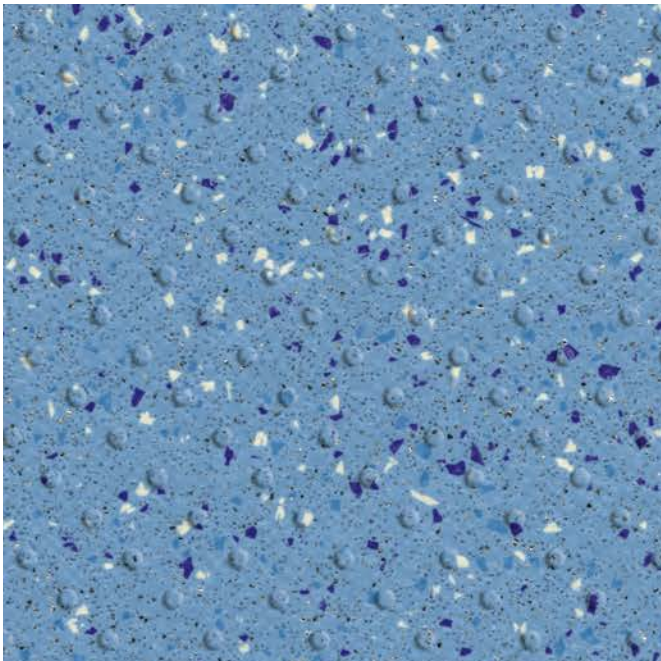


IN
DISTRIBUTION

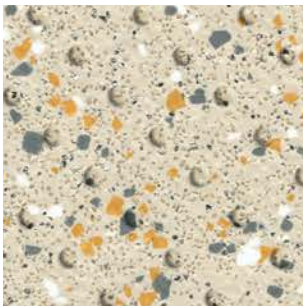
Tarasafe Ultra H₂O

High performance slip resistant safety flooring for wet and dry, barefoot and shod applications

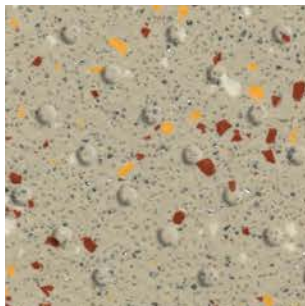
 Compact
2m x 20m
  ≥36
Barefoot
  R11
Shod
  HSE
36+
SLIP RESISTANT



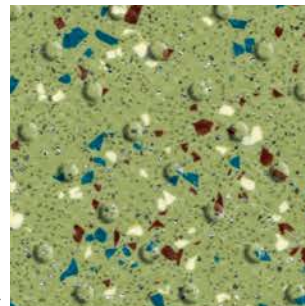
7413 Ocean Blue
WR: 0585 0823 / LRV: 31.8



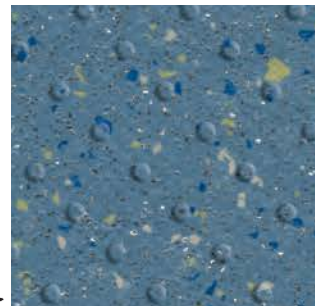
7325 Seashore
WR: 0585 2654 / LRV: 63.0



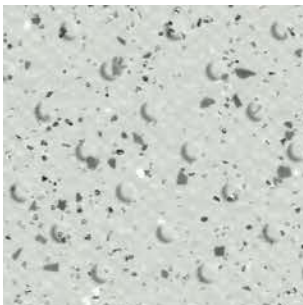
7314 Sand
WR: 0585 2174 / LRV: 41.2



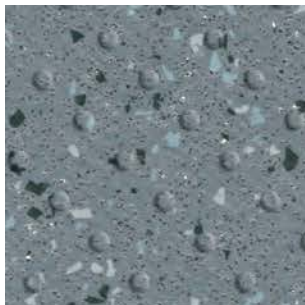
7513 Seagrass
WR: 0585 2499 / LRV: 36.2



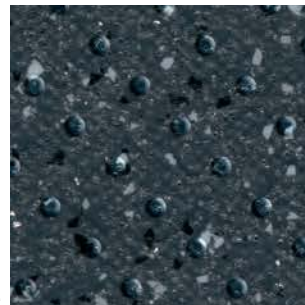
7418 Marine
WR: 0585 0190 / LRV: 22.8



7720 Iceberg
WR: 0585 2415 / LRV: 60.6



7746 Stone
WR: 0585 0033 / LRV: 23.6



7732 Gravel
WR: 0585 2238 / LRV: 9.7



Suitable for both
barefoot and shod use

This range complements the Tarasafe Ultra collection (see reverse).



WR: Welding Rods*
LRV: Light Reflectance Value
*Subject to change. Please confirm when ordering.

Gerflor
theflooringgroup

Tarasafe Ultra H₂O

For wet and dry, barefoot and shod applications

Tarasafe Ultra H₂O is an enhanced slip resistant safety vinyl floor covering with a raised emboss designed for applications where there are continuous wet areas.

It provides exceptional barefoot comfort and is an ideal solution for shower and changing rooms and any high-level risk wet areas where heavy duty safety flooring is required.

A popular choice in the education, healthcare, leisure, hospitality and housing markets, Tarasafe Ultra H₂O is suitable for any applications where slip resistance needs to be maintained.

- High level of wet and dry slip resistance
- Complements the popular Tarasafe Ultra range

TECHNICAL INFORMATION Tarasafe Ultra H₂O

Thickness	EN 428	mm	2.0
Wear layer thickness	EN 429	mm	1.00
Weight	EN 430	g/m ²	2400
Width of sheet	EN 426	cm	200
Length of sheet	EN 426	lm	20
Norm / Product specification	-	-	EN 649
European classification	EN 685	class	34 -43
Fire rating	EN 13501-1	class	Cfl-s1
Static electrical propensity	EN 1815	kV	< 2
Slip resistance wet: shod	DIN 51 130	class	R11
Slip resistance wet: barefoot	DIN 51 097	class	C
Slip resistance: pendulum test	BS 7976-2	PTV	≥ 36
Surface roughness	Rtm/Rz	µm	≥ 20
Slip resistance: ramp test	EN 13845 (annex C)	class	ESb
Wear resistance	EN 660.2	mm ³	≤ 4.0
Wear group	EN 189	group	P
Type binder content	EN ISO 10582	type	I
Dimensional stability	EN 434	%	≤ 0.40
Residual indentation	EN 433	mm	≤ 0.10
Castor chair test (type W)	EN 425	-	OK
Thermal conductivity	EN 12524	W/(m.K)	0.25
Colour fastness	EN 20 105-B02	degree	≥ 6
Chemical products resistance	EN 423	-	OK
Anti-bacterial activity (E.coli - S.aureus - MRSA) ^[1]	ISO 22196	-	>99% inhibits growth
TVOC after 28 days	ISO 16000-6	µg/m ³	<100
CE	EN 14041		



For more information please visit: www.gerflor.co.uk

[1] The implementation of an effective cleaning method is the best defence against infection

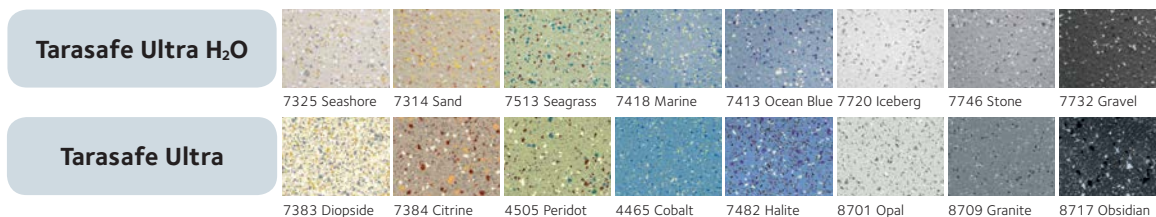


CI S1B	(43)	Tn6
--------	------	-----

UK reference - March 2022

Order your free samples now and don't forget to ask for your Tarasafe Ultra safety floor

Complementary colour references:



For more information please contact:

United Kingdom
 Tel: +44 (0) 3332 412 901
 Email: contractuk@gerflor.com
 Visit: www.gerflor.co.uk

Republic of Ireland
 Tel: +353 (0) 42 966 1431
 Email: gerflorirl@gerflor.com
 Visit: www.gerflor.ie



Gerflor
 theflooringgroup